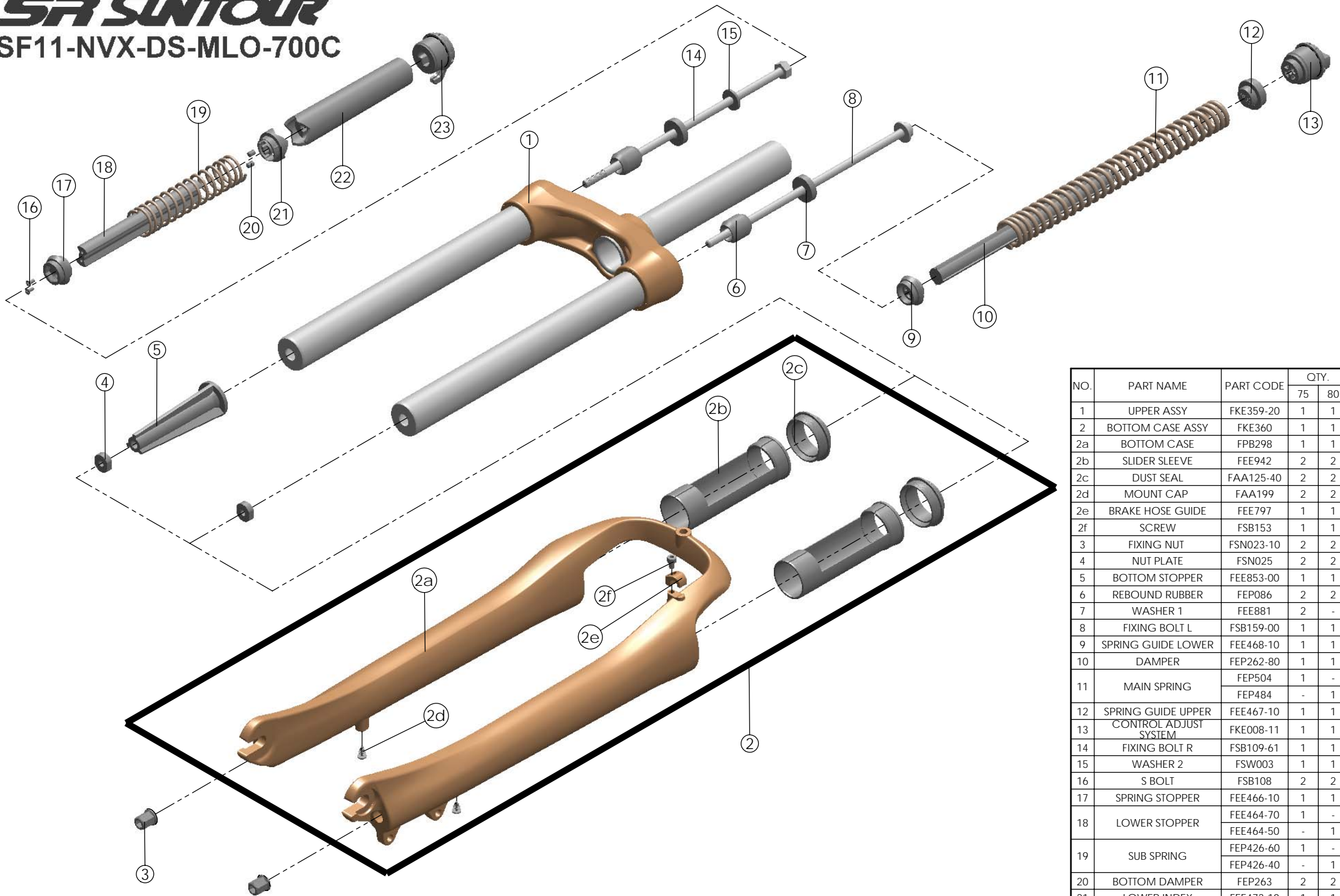


SF SUNTOUR

SF11-NVX-DS-MLO-700C



| NO. | PART NAME | PART CODE | QTY. | |
|-----|-----------------------|-----------|------|----|
| | | | 75 | 80 |
| 1 | UPPER ASSY | FKE359-20 | 1 | 1 |
| 2 | BOTTOM CASE ASSY | FKE360 | 1 | 1 |
| 2a | BOTTOM CASE | FPB298 | 1 | 1 |
| 2b | SLIDER SLEEVE | FEE942 | 2 | 2 |
| 2c | DUST SEAL | FAA125-40 | 2 | 2 |
| 2d | MOUNT CAP | FAA199 | 2 | 2 |
| 2e | BRAKE HOSE GUIDE | FEE797 | 1 | 1 |
| 2f | SCREW | FSB153 | 1 | 1 |
| 3 | FIXING NUT | FSN023-10 | 2 | 2 |
| 4 | NUT PLATE | FSN025 | 2 | 2 |
| 5 | BOTTOM STOPPER | FEE853-00 | 1 | 1 |
| 6 | REBOUND RUBBER | FEP086 | 2 | 2 |
| 7 | WASHER 1 | FEE881 | 2 | - |
| 8 | FIXING BOLT L | FSB159-00 | 1 | 1 |
| 9 | SPRING GUIDE LOWER | FEE468-10 | 1 | 1 |
| 10 | DAMPER | FEP262-80 | 1 | 1 |
| 11 | MAIN SPRING | FEP504 | 1 | - |
| | | FEP484 | - | 1 |
| 12 | SPRING GUIDE UPPER | FEE467-10 | 1 | 1 |
| 13 | CONTROL ADJUST SYSTEM | FKE008-11 | 1 | 1 |
| 14 | FIXING BOLT R | FSB109-61 | 1 | 1 |
| 15 | WASHER 2 | FSW003 | 1 | 1 |
| 16 | S BOLT | FSB108 | 2 | 2 |
| 17 | SPRING STOPPER | FEE466-10 | 1 | 1 |
| 18 | LOWER STOPPER | FEE464-70 | 1 | - |
| | | FEE464-50 | - | 1 |
| 19 | SUB SPRING | FEP426-60 | 1 | - |
| | | FEP426-40 | - | 1 |
| 20 | BOTTOM DAMPER | FEP263 | 2 | 2 |
| 21 | LOWER INDEX | FEE473-10 | 1 | 1 |
| 22 | UPPER STOPPER | FEE463-10 | 1 | 1 |
| 23 | MLO TOP CAP ASSY | FKE078-04 | 1 | 1 |