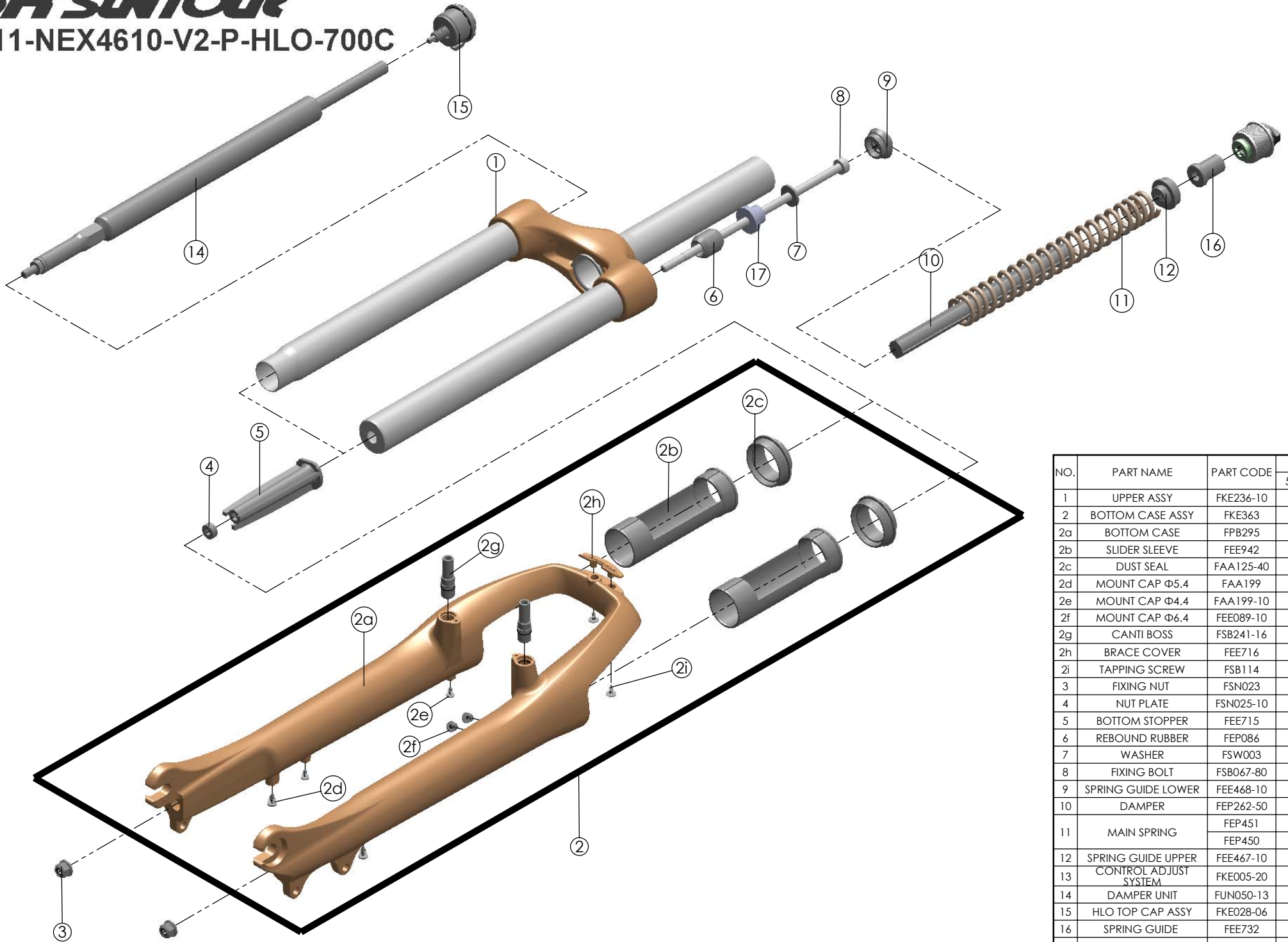


# SF SUNTOUR

## SF11-NEX4610-V2-P-HLO-700C



| NO. | PART NAME             | PART CODE | QTY. |    |
|-----|-----------------------|-----------|------|----|
|     |                       |           | 50   | 63 |
| 1   | UPPER ASSY            | FKE236-10 | 1    | 1  |
| 2   | BOTTOM CASE ASSY      | FKE363    | 1    | 1  |
| 2a  | BOTTOM CASE           | FPB295    | 1    | 1  |
| 2b  | SLIDER SLEEVE         | FEE942    | 2    | 2  |
| 2c  | DUST SEAL             | FAA125-40 | 2    | 2  |
| 2d  | MOUNT CAP Φ5.4        | FAA199    | 2    | 2  |
| 2e  | MOUNT CAP Φ4.4        | FAA199-10 | 2    | 2  |
| 2f  | MOUNT CAP Φ6.4        | FEE089-10 | 2    | 2  |
| 2g  | CANTI BOSS            | FSB241-16 | 2    | 2  |
| 2h  | BRACE COVER           | FEE716    | 1    | 1  |
| 2i  | TAPPING SCREW         | FSB114    | 2    | 2  |
| 3   | FIXING NUT            | FSN023    | 2    | 2  |
| 4   | NUT PLATE             | FSN025-10 | 1    | 1  |
| 5   | BOTTOM STOPPER        | FEE715    | 1    | 1  |
| 6   | REBOUND RUBBER        | FEP086    | 1    | 1  |
| 7   | WASHER                | FSW003    | 1    | 1  |
| 8   | FIXING BOLT           | FSB067-80 | 1    | 1  |
| 9   | SPRING GUIDE LOWER    | FEE468-10 | 1    | 1  |
| 10  | DAMPER                | FEP262-50 | 1    | 1  |
| 11  | MAIN SPRING           | FEP451    | 1    | -  |
|     |                       | FEP450    | -    | 1  |
| 12  | SPRING GUIDE UPPER    | FEE467-10 | 1    | 1  |
| 13  | CONTROL ADJUST SYSTEM | FKE005-20 | 1    | 1  |
| 14  | DAMPER UNIT           | FUN050-13 | 1    | 1  |
| 15  | HLO TOP CAP ASSY      | FKE028-06 | 1    | 1  |
| 16  | SPRING GUIDE          | FEE732    | 1    | 1  |
| 17  | REBOUND SLEEVE        | FEE452    | 1    | -  |